

# KMDA INCORPORATED

Assembly Instructions

## ICERUNNER EXPEDITION



Thank you for purchasing one of the newest, lightest and most versatile houses on the market. We feel you will be completely satisfied with your purchase.

## **WARRANTY**

This product comes with a 30 day warranty for any manufacturer's defects. This warranty does not cover damage or wear from unintended use of the product. Warranty is non-transferable and all claims must be accompanied with an original, dated receipt.

Free replacement windows are provided for the life of the house.

For warranty help please contact KMDA, Inc. by one of the following methods.

### **By Phone:**

(218) 245-3040, Mon-Fri, 9am to 4pm CST

### **By Mail:**

KMDA, Inc.

PO Box 509

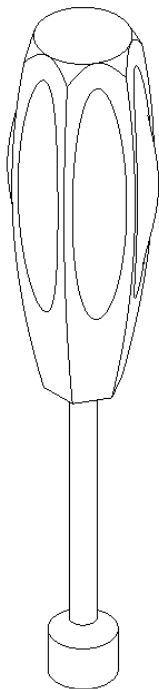
Bovey, MN 55709

## **LIMITATION OF LIABILITY**

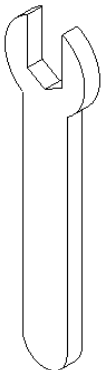
KMDA, Inc. is not liable for any injury, loss, damage or expense, direct or consequential, from the use or misuse of this product. Liability is limited to repair and replacement of parts as stated by the terms in the warranty.

TOOLS NEEDED

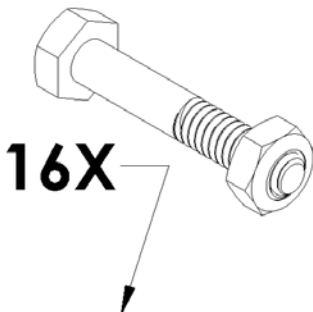
NUT DRIVER COMES WITH ICE HOUSE



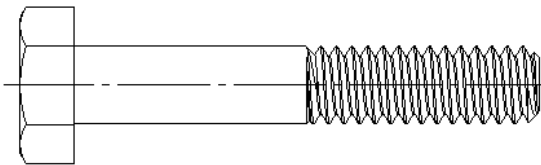
WRENCH COMES WITH ICE HOUSE



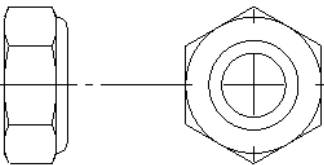
APPROXIMATE ASSEMBLY TIME:  
45-60 minutes.



HARDWARE

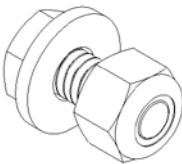


HEX HEAD CAP SCREW 1/4"-20 UNC X 1 1/2"  
PART # 109

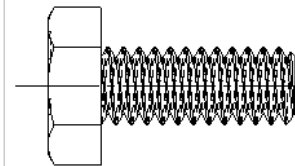


NY-LOCK HEX JAM NUT 1/4"-20 UNC X 7/16"  
PART # 110

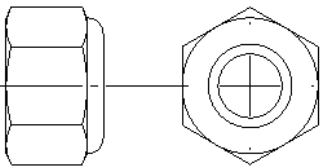
4X



FLAT WASHER FOR 1/4" BOLT  
PART # 128



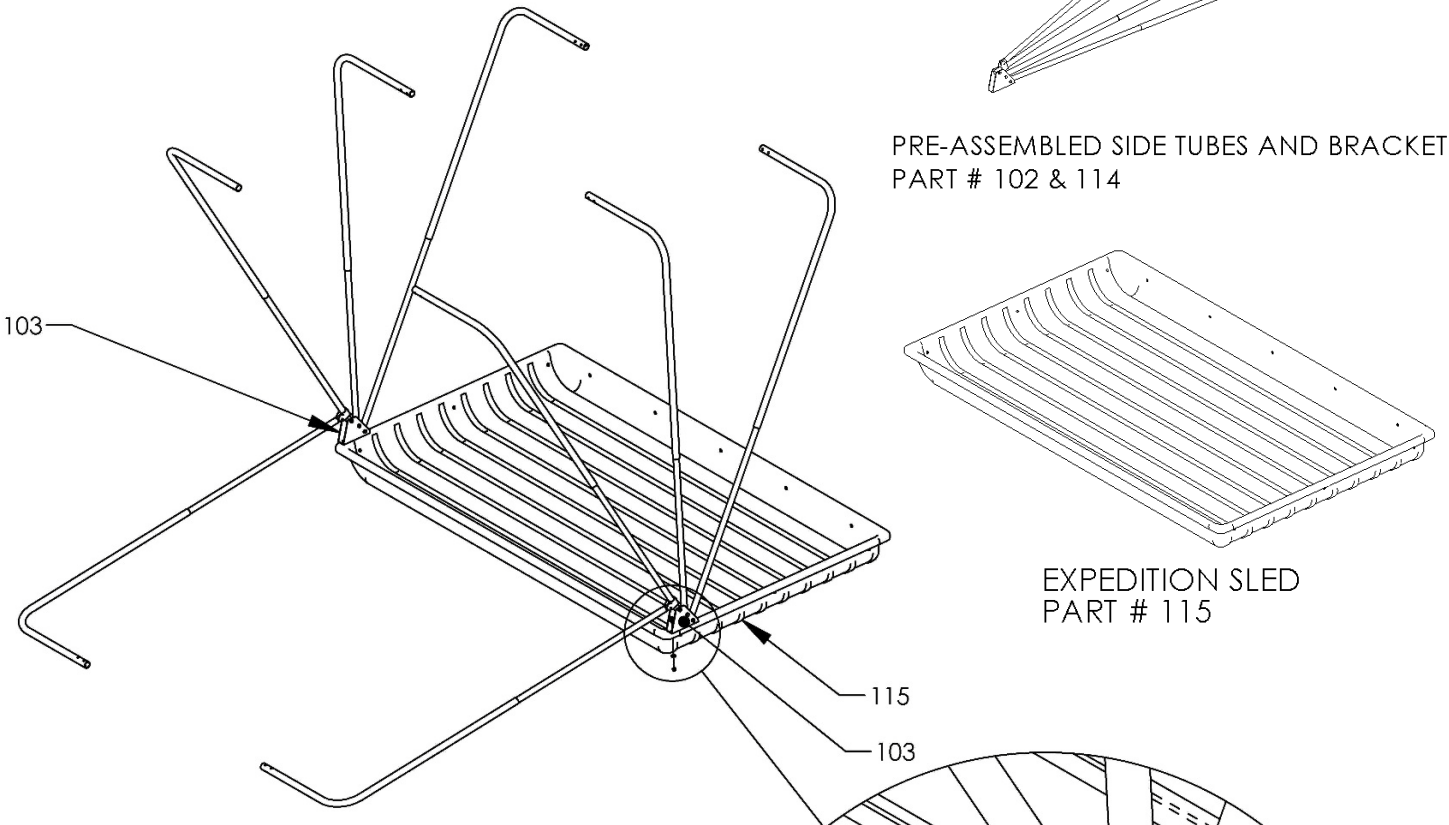
HEX HEAD CAP SCREW 1/4"-20 UNC X 5/8"  
PART # 116



NY-LOCK HEX NUT 1/4"-20 UNC X 7/16"  
PART # 117

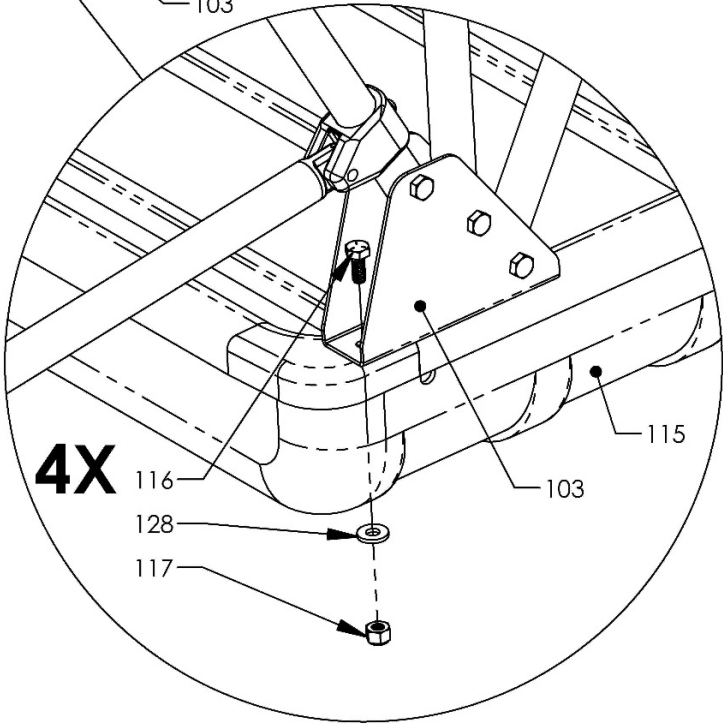
# STEP 1: Attaching Brackets to Sled

**ATTENTION:** IF YOU PLAN TO INSTALL THE OPTIONAL HYFAX KIT, DO THIS BEFORE STARTING STEP 1.



## STEP 1 ASSEMBLY PART # 101

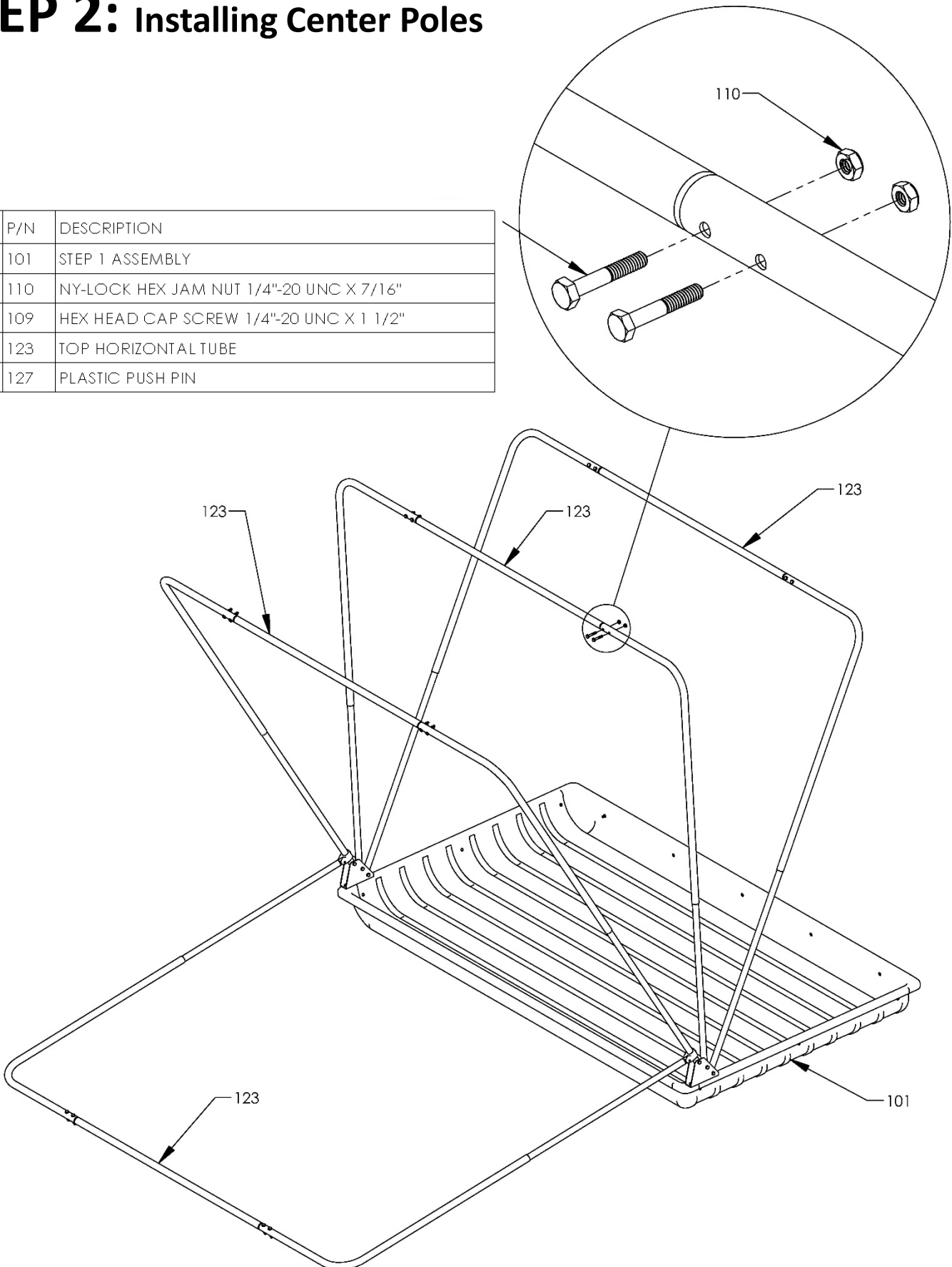
QTY.	P/N	DESCRIPTION
1	102	PRE-ASSEMBLED SIDE TUBES AND BRACKET
1	114	PRE-ASSEMBLED SIDE TUBES AND BRACKET (OPP HAND)
1	115	EXPEDITION SLED
4	116	HEX HEAD CAP SCREW 1/4"-20 UNC X 5/8"
4	117	NY-LOCK HEX NUT 1/4"-20 UNC X 7/16"
4	128	FLAT WASHER FOR 1/4" BOLT



INSTALLING BRACKETS ONLY NEEDS TO BE DONE  
ONCE **(NOTE THE ORIENTATION OF THE BRACKET)**

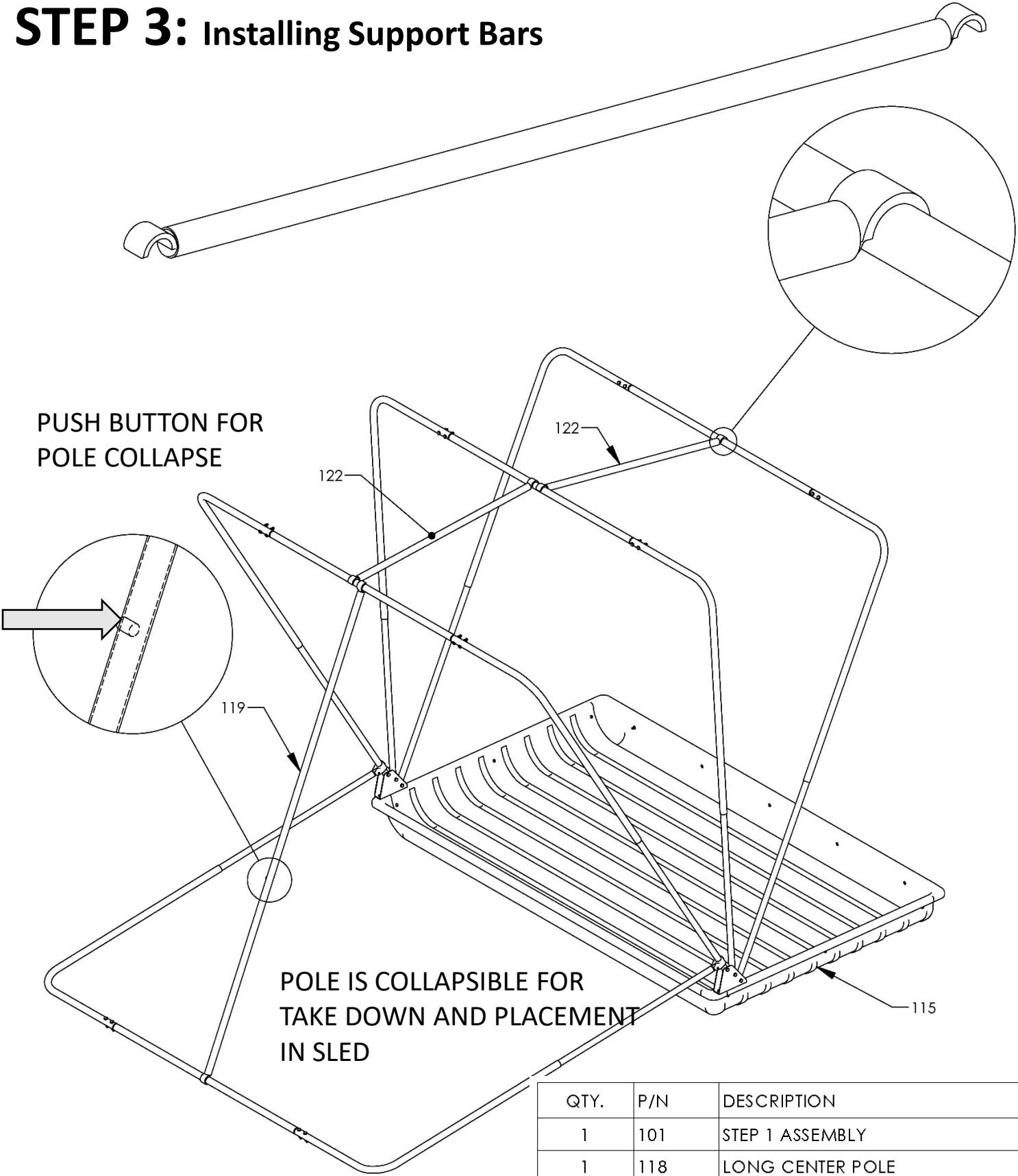
# STEP 2: Installing Center Poles

QTY.	P/N	DESCRIPTION
1	101	STEP 1 ASSEMBLY
16	110	NY-LOCK HEX JAM NUT 1/4"-20 UNC X 7/16"
16	109	HEX HEAD CAP SCREW 1/4"-20 UNC X 1 1/2"
4	123	TOP HORIZONTAL TUBE
11	127	PLASTIC PUSH PIN



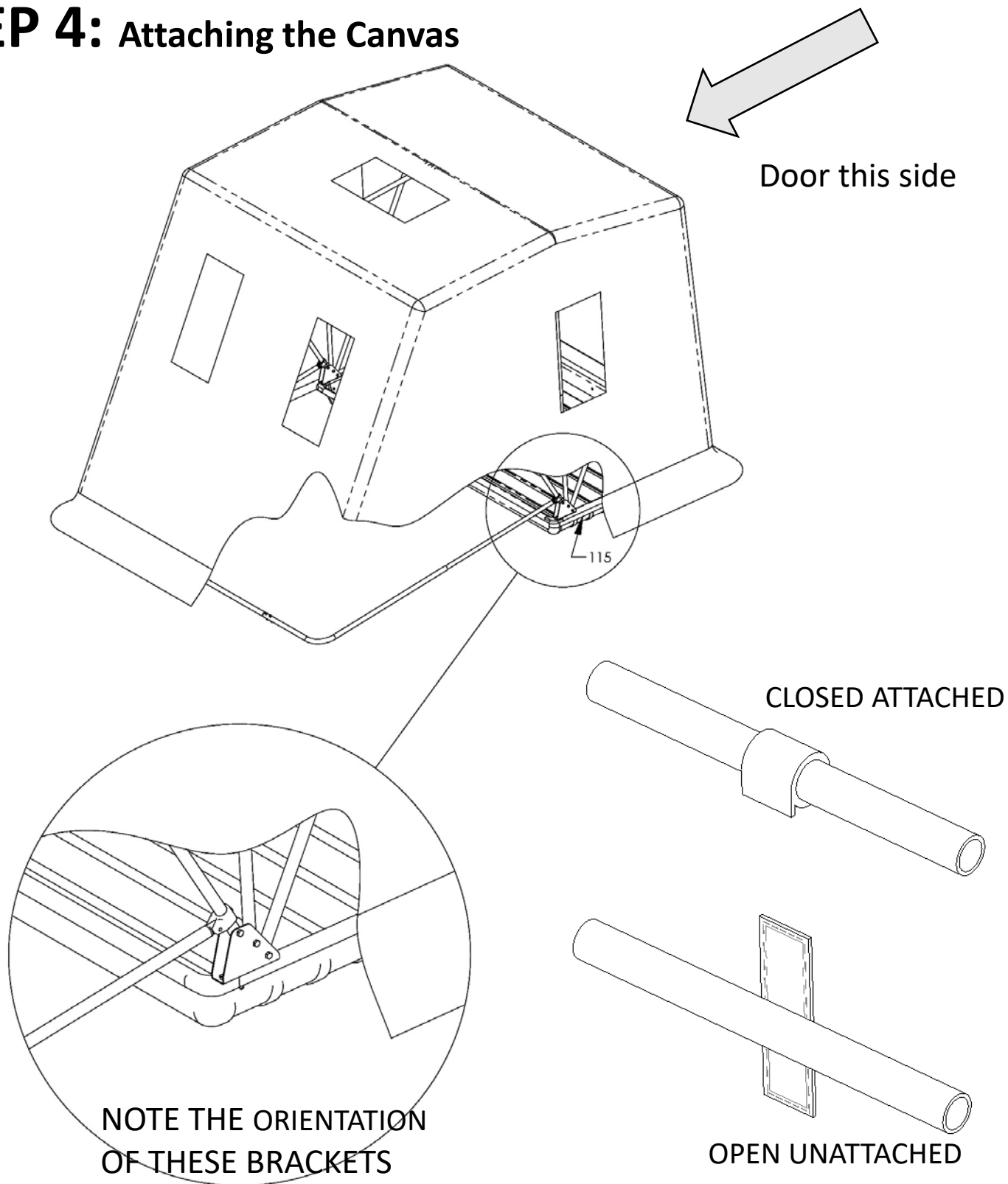
INSTALLING CENTER POLES ONLY NEEDS TO BE DONE ONCE

# STEP 3: Installing Support Bars



QTY.	P/N	DESCRIPTION
1	101	STEP 1 ASSEMBLY
1	118	LONG CENTER POLE
2	121	SHORT CENTER POLE
11	127	PLASTIC PUSH PIN

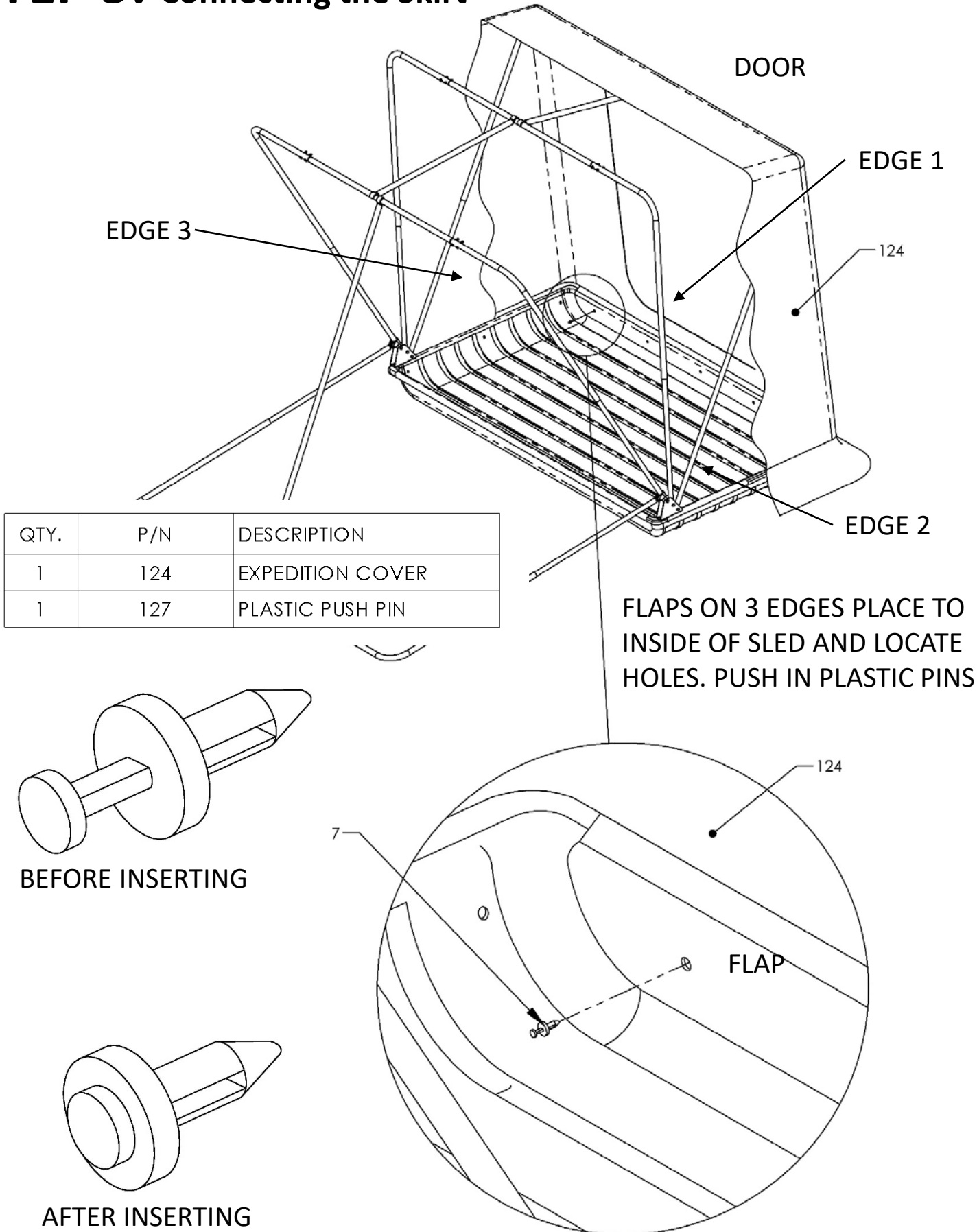
## STEP 4: Attaching the Canvas



QTY.	P/N	DESCRIPTION
1	101	STEP 1 ASSEMBLY
1	124	EXPEDITION COVER
1	127	PLASTIC PUSH PIN

VELCRO STRAPS ON INSIDE  
OF COVER ATTACH TO POLES

# STEP 5: Connecting the Skirt



# TAKING DOWN THE FISH HOUSE

1. With the support bars still in place, unlock all of the push button pins, and partially collapse each pole.
2. Remove the support bars starting with the one nearest the door. Store the support bars in the sled. Zip the door closed if it is open.
3. Starting with the frame poles nearest the door, collapse each pair together.
4. Tuck all of the canvas fabric and the skirt into the sled.
5. Place the cover over the fish house and sled, and make sure that no fabric is hanging out before dragging or moving the house.

## SAFE USE and WARNINGS

Read and follow all instructions for safe use. Failure to do so could result in serious injury or death.



DO NOT USE OPEN FLAME HEATERS IN THIS ICE SHELTER. THE FABRIC IS NOT FIREPROOF AND CAN MELT IF IT CONTACTS A HOT SURFACE.



ASPHYXIATION MAY RESULT FROM OXYGEN DEPLETING HEATERS. MAKE SURE FISH HOUSE VENTS ARE OPEN WHEN IN USE.



DO NOT LEAVE SHELTER UNATTENDED. IF USED AT NIGHT, MAKE SURE THERE ARE REFLECTORS VISIBLE ON ALL SIDES OF THE SHELTER TO PREVENT COLLISIONS.

# PRECAUTIONS

To protect your fish house and insure a long life it is important to following these guidelines:

- 1. Do NOT pack gear on top of the fabric cover.** Sharp edges and the substantial weight of items like: ice augers, heaters, propane tanks, and chisels can damage the fabric.
- 2. Do NOT allow gear to sit on the fabric inside of the sled.** Gear should only be placed on the bottom of the sled when transporting.
- 3. Keep the fabric out of the framework and hinge brackets when putting up or taking down the shelter.** The fabric can be damaged if it is pinched in between.
- 4. Make sure the canvas and skirt of the fish house is tucked into the sled and under the sled cover. This is especially important when dragging or hauling the sled behind an ATV or snowmobile. THE SKIRT WILL BE DAMAGED IF IT HANGS OUT!**
- 5. Use caution and common sense when pulling the shelter behind an ATV or snowmobile on roads, trails, and the frozen lake.** The rough nature of the terrain can lead to major damage if the shelter is abused.
- 6. Keep heat sources away from the fabric.** The nylon fabric can melt or lose its protective coating if a heater is too close.
- 7. Be extremely careful with any fabric that becomes frozen to the ice.** Pulling fabric that is frozen to the ice will most likely tear. Loosen carefully before pulling.
- 8. Dry out the shelter after each use and before storing.** Moisture will reduce the lifespan of any fabric, whereas, a well cared for and dried canvas will last for years.

# ICE RUNNER ACCESSORIES

KMDA, Inc. provides many accessories to help you get the most out of your new fish house. We recommend the following items:

## LAKCO Ice Anchors



SA1

SA2

**ICE RUNNER**

## SLED HITCH

ATTACHES TO ANY SNOWMOBILE OR ATV RECEIVER HITCH

- The Perfect Complement to your Ice Runner Fish House
- Heavy-duty construction; Built to last
- Attaches to any snowmobile or ATV receiver hitch
- Hinging tow bar folds over for easy hauling and storage
- Universal design can be adapted to most sleds

MADE IN CHINA

DISTRIBUTED BY  
KMDA, P.O. BOX 509, BOVEY, MN 55709

**ICE RUNNER**

## HYFAX KIT

A Perfect Fit for IceRunner Fish Houses!

- Improves sled tracking.
- Prevents wear to sled bottom.
- High density black plastic is more UV resistant.
- Includes stainless steel mounting hardware.
- Can be adapted to most sleds.

MADE IN CHINA

DISTRIBUTED BY  
KMDA, P.O. BOX 509, BOVEY, MN 55709

**EXPLORER READY KIT:**  
INCLUDES 4 STRIPS 55" LONG

**EXPEDITION READY KIT:**  
INCLUDES 5 STRIPS 74" LONG

Find these items at your local retailer, or visit:

[www.kmdainc.com](http://www.kmdainc.com)

For a complete selection of all our great products.

**KMDA  
INCORPORATED**



**[www.kmdainc.com](http://www.kmdainc.com)**